

MIPEG 2000 - QUESTIONNAIRE



PLEASE COMPLETE ONE
QUESTIONNAIRE PER CRANE
UNLESS CRANES ARE
EXACTLY IDENTICAL

CUSTOMER: _____

ADDRESS: _____

CONTACT PERSON: _____

PHONE: _____ FAX or EMAIL: _____

DESTINATION OF EQUIPMENT (Name of Platform or Rig): _____

CRANE MAKE & MODEL: _____

CRANE LOCATION:(i.e., Port, Aft, Stb.) _____

TYPE OF MIPEG SYSTEM REQUIRED: _____ (Recording or Non- Recording)

OWNERS NAME / TAG CODE (Max 16 Characters) _____
(Recording systems only)

CRANE DETAILS	Main	Whip
Max Single Line Pull:	_____	_____
Max. Crane Capacity:	_____	_____
Parts of line used:	_____	_____
Rope Diameter:	_____	_____

GENERAL INFORMATION

Power available to Mipeg: _____

Warning limit (yellow light): _____ % SWL (85-98%, 95% Standard)

Alarm Limit (red light) : _____ % SWL (100-110%, 110% Standard)

Units on Display (Tonnes & Metre or Lbs. & Feet): _____

HAZARDOUS AREA: Circle One In Each Area

Boom:	All Boom components are standard, Zone 1			
Cab:	Safe Area	Zone 1	Zone 2	
Machinery house:	Safe Area	Zone 1	Zone 2	
Remote Crane Controls	Safe Area	Zone 1	Zone 2	Not Applicable

MIPEG 2000 systems are normally configured for up to 4 outputs and 4 inputs.
An extra card could be added as an option. This card could give 8 outputs and 8 inputs extra. Both types of signals normally 24 Vdc. If required, voltfree contacts (relays) could be included.

OUTPUTS REQUIRED FROM MIPEG SYSTEM:

- 1. _____
- 2. _____
- 3. _____
- 4. _____

Optional card :

- 5. _____
- 6. _____
- 7. _____
- 8. _____
- 9. _____
- 10. _____
- 11. _____
- 12. _____

INPUTS SUPPLIED FROM THE CRANE:

- 1. _____
- 2. _____
- 3. _____
- 4. _____

Optional Card:

- 5. _____
- 6. _____
- 7. _____
- 8. _____
- 9. _____
- 10. _____
- 11. _____
- 12. _____

DISPLAY LOCATION:

- Inside Cab
- Remote Crane Control. Display Cable Length Required: _____
(Measured from Crane Machinery Room through pedestal to Remote Crane Control, 200' typical):
- Other, define. _____

COMPUTER CABINET LOCATION:

- Inside Cab
- Remote Crane Control. Display Cable Length Required: _____
(Measured from Crane Machinery Room through pedestal to Remote Crane Control, 200' typical):

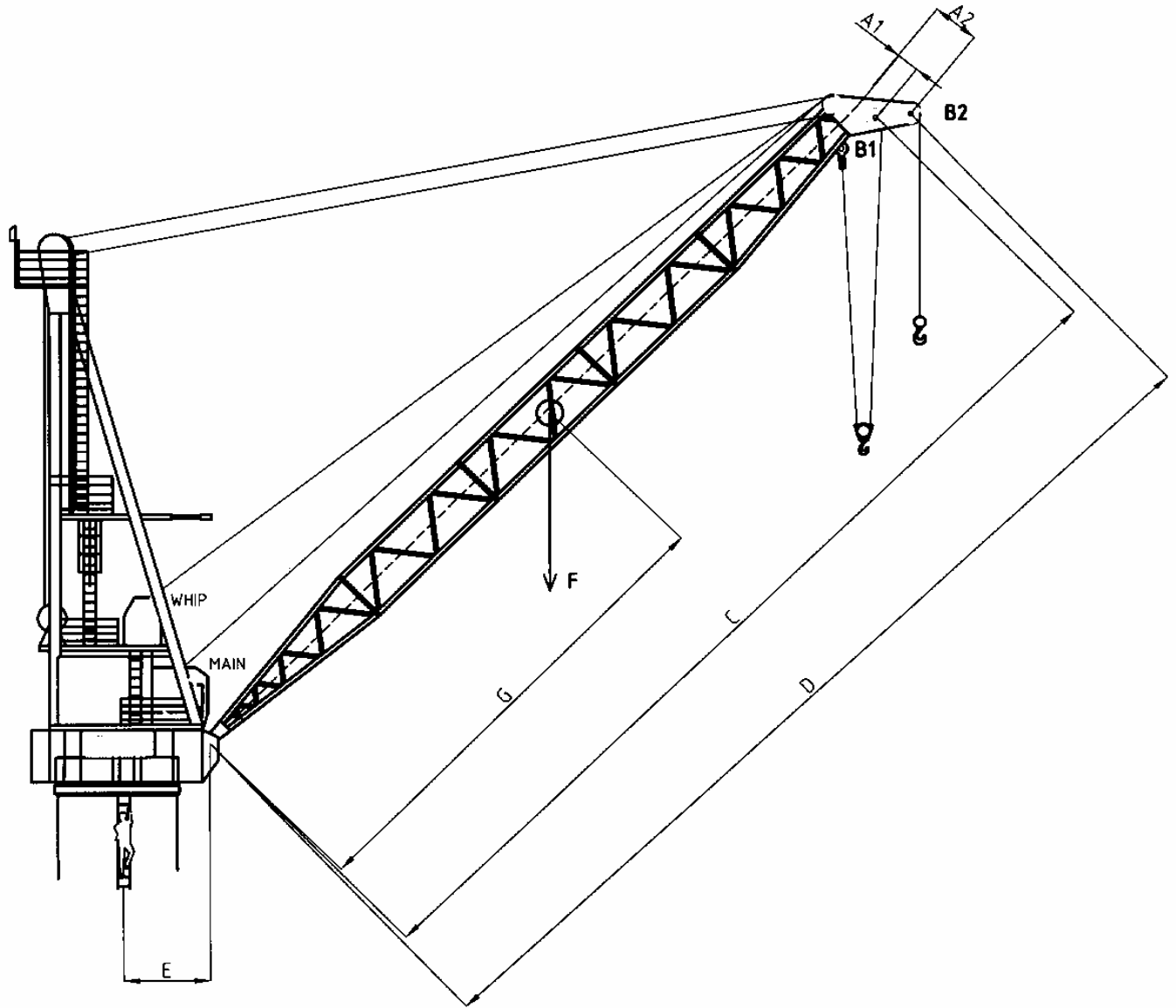
Other, define. _____

LOAD CHARTS:

ALL LOAD CHARTS TO BE SUPPLIED WITH THE COMPLETED QUESTIONNAIRE.

Attached to Questionnaire?

- Yes
- No



Crane Dimensions Required:

A1 - Pulley Offset, Main: _____ A2 - Pulley Offset, Whip: _____

B1 - Sheave Radius, Main: _____ B2 - Sheave Radius, Whip: _____

C - Main Boom Length: _____ D - Whip Boom Length: _____

E - Distance from centre of slew to Boom foot pin: _____

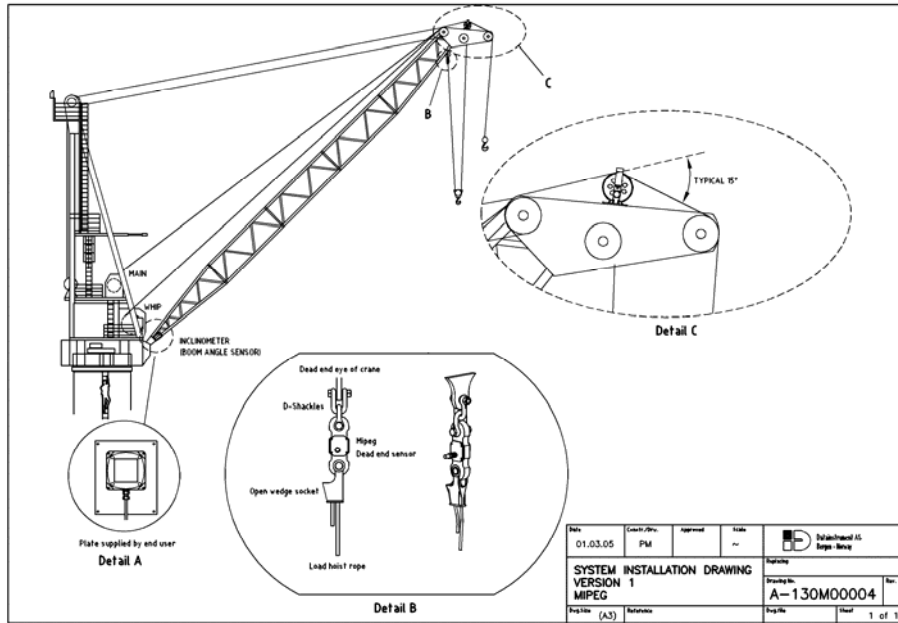
Mipeg 2000 recording systems only:

F - Dead Weight of Boom: _____

G - Distance from Boom foot pin to Centre Of Gravity of Boom: _____

H - Maximum Design Moment of crane: _____

Below shows a typical crane installation with a main hoist dead end sensor and a whip (aux) sensor. Please provide pictures and drawings of the boom tip and dead end information as outlined below.



Please identify the following measures to allow correct connection to the crane dead end point;
Rope wedge socket information;

L1: _____ L2: _____ d1: _____

Dead end point dimensions;

L3: _____ L4: _____ d2: _____

Wedge socket Manufacturer: _____

Size & Type: _____

If a different system or arrangement exist eg. utilising two side plates, swivels etc. Please send pictures or a simple illustration highlighting details for sensor interface area.

See next page for detailed drawing.

