

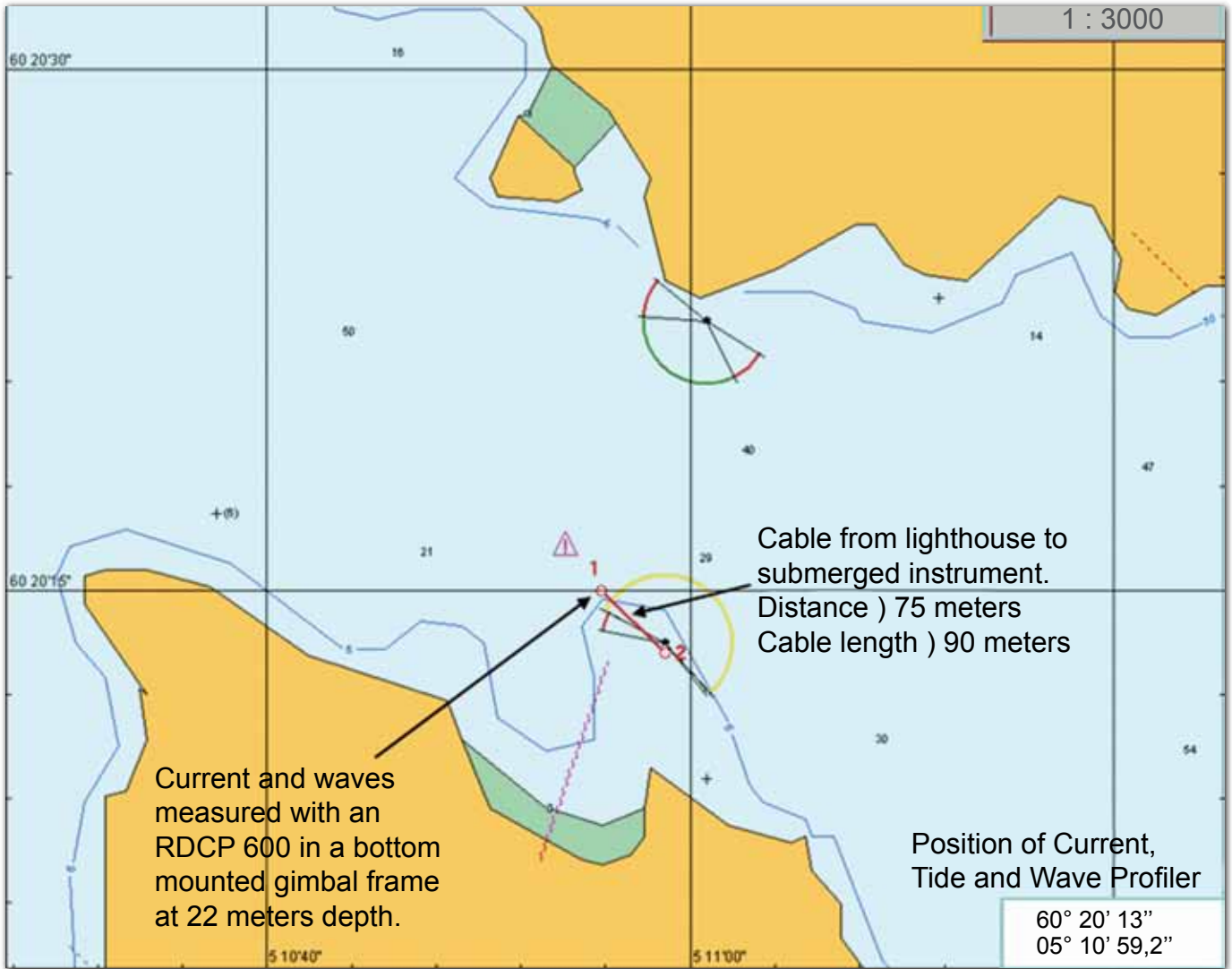
# Demo Coastal Station with On-Line Data

**Real-time Environmental Data  
from Bergen Fairway.  
Coastal Observation Station  
in Vatilestraumen (the  
Narrows Maelstrom)  
on Norway's rugged  
West Coast**

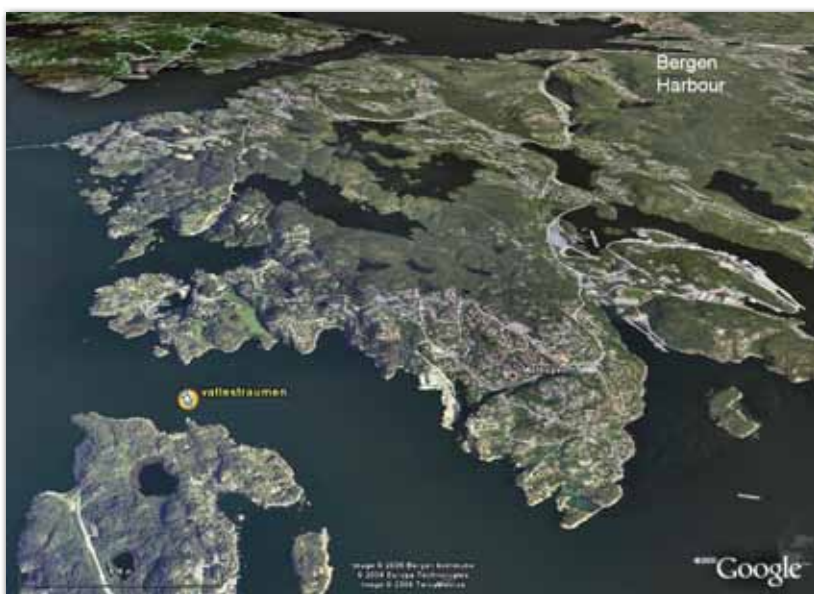
**Consisting:  
Automatic Weather Station  
AWS 2700 and Recording  
Doppler Current  
Profiler 600 and  
GPRS Real-time  
Transmission  
System**

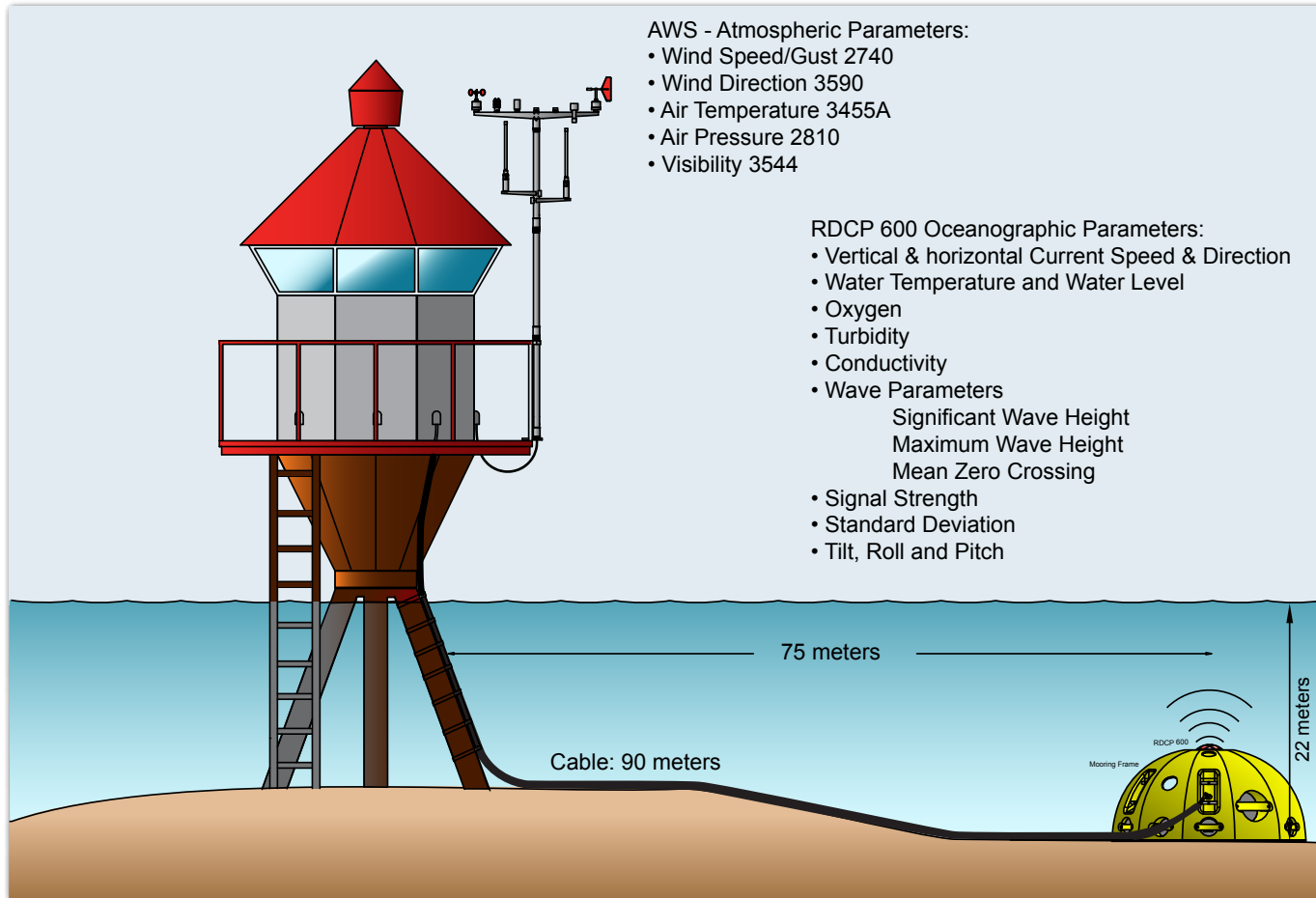


# Location: 60° 20' 13"N; 05° 10' 59.2"E



These are the narrows in Bergen Fairway where most maritime traffic must pass. The currents here are driven by tides, storm surges and wind. This demonstration station has been put in place to clarify graphically the oceanographic and atmospheric measurements obtained by this type instrumentation. Note that surface currents are surfaced referred giving exact measurements no matter the tidal state. Motor Ship Rocknes capsized here in January 2004 after striking an uncharted reef.





The Automatic Weather Station AWS 2700 is affixed the lighthouse in the channel. The Current Profiler RDCP 600 is moored 22 meters deep and 75 meters from the lighthouse.

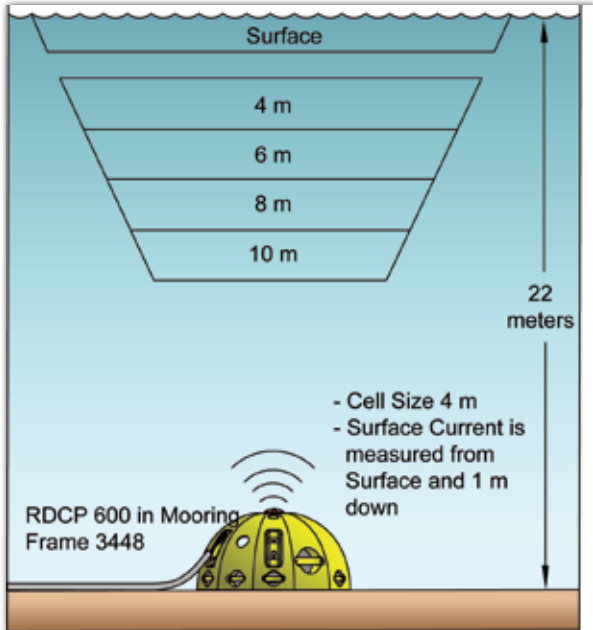
**Atmospheric Parameters :**

- Wind Speed, Gust and Direction
- Air Pressure
- Air Temperature
- Visibility

**Oceanographic Parameters:**

- Vertical and horizontal Current Speed and Direction
- Water Temperature and Level
- Oxygen, Turbidity and Conductivity
- Signal Strength, Standard Deviation
- Tilt, Roll and Pitch

**Wave parameters;** Significant and Maximum Wave Height, Mean Zero Crossing, Peak and Mean Wave Period

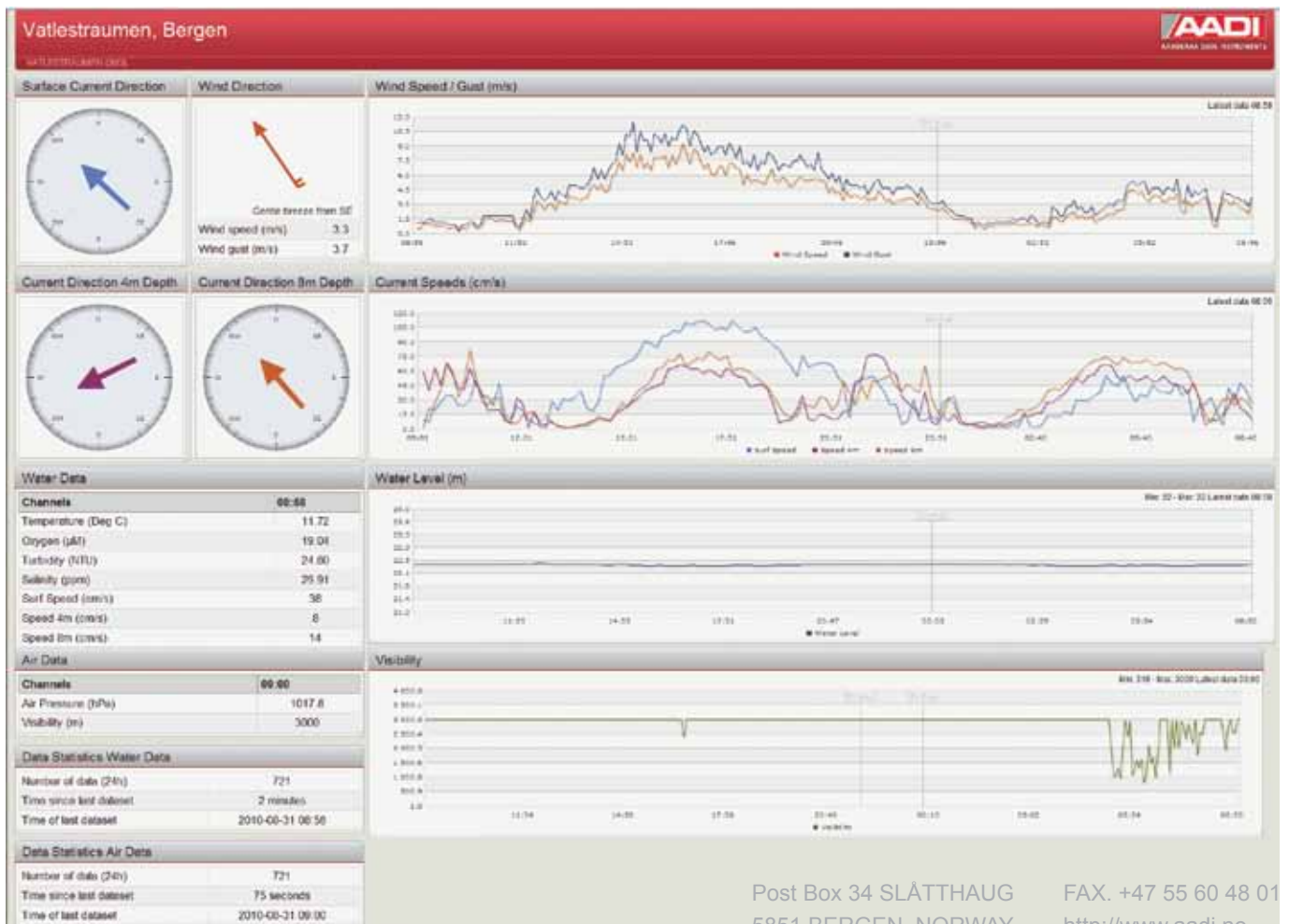




the web site for near real-time data is:  
[http://217.68.102.27/AADI\\_DisplayProgram/setups/vatlestraumen/default.aspx](http://217.68.102.27/AADI_DisplayProgram/setups/vatlestraumen/default.aspx)

## The GPRS Real-time Transmission System

Data are transferred via Mobile Network and Internet with a secure VPN connection to the company's private network and then shown on a PC with display software



Post Box 34 SLÅTTHAUG  
 5851 BERGEN, NORWAY  
 TEL. +47 55 60 48 00

FAX. +47 55 60 48 01  
<http://www.aadi.no>  
 e-mail: info@aadi.no