

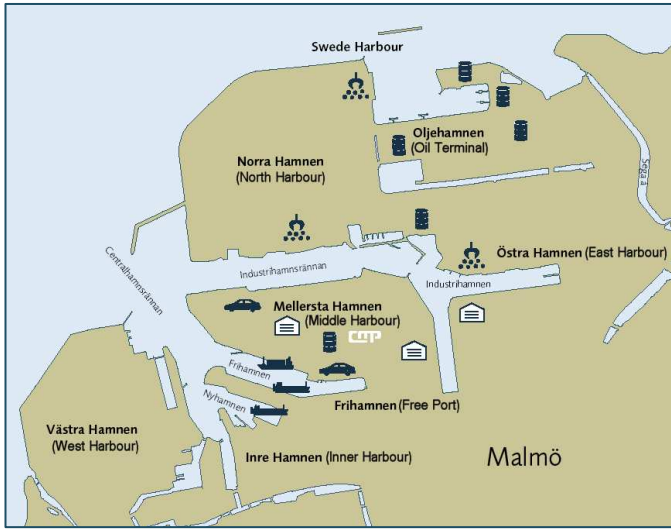
CMP COPENHAGEN MALMÖ PORT



The Data Buoy measures current at 3 depths using Doppler Current Sensors DCS 3900

2003. 9. 9

Pictures by courtesy of Malmö Port



(CMP). It is located in southern Sweden, close to Copenhagen and the bridge between Sweden and Denmark. Copenhagen Malmö Port is an important part of the infrastructure in the Øresund region. Malmö is a busy port, with large ships entering the port. The largest ships are 250 meters long, and good information on wind and current conditions is needed to run the port properly. Sjøfartsverket (governmental sea safety organization) has asked for current monitoring for a long time. Two Aanderaa Data Buoys (DB 4280) with wind and current sensors were bought by the port company to comply with the requirements.



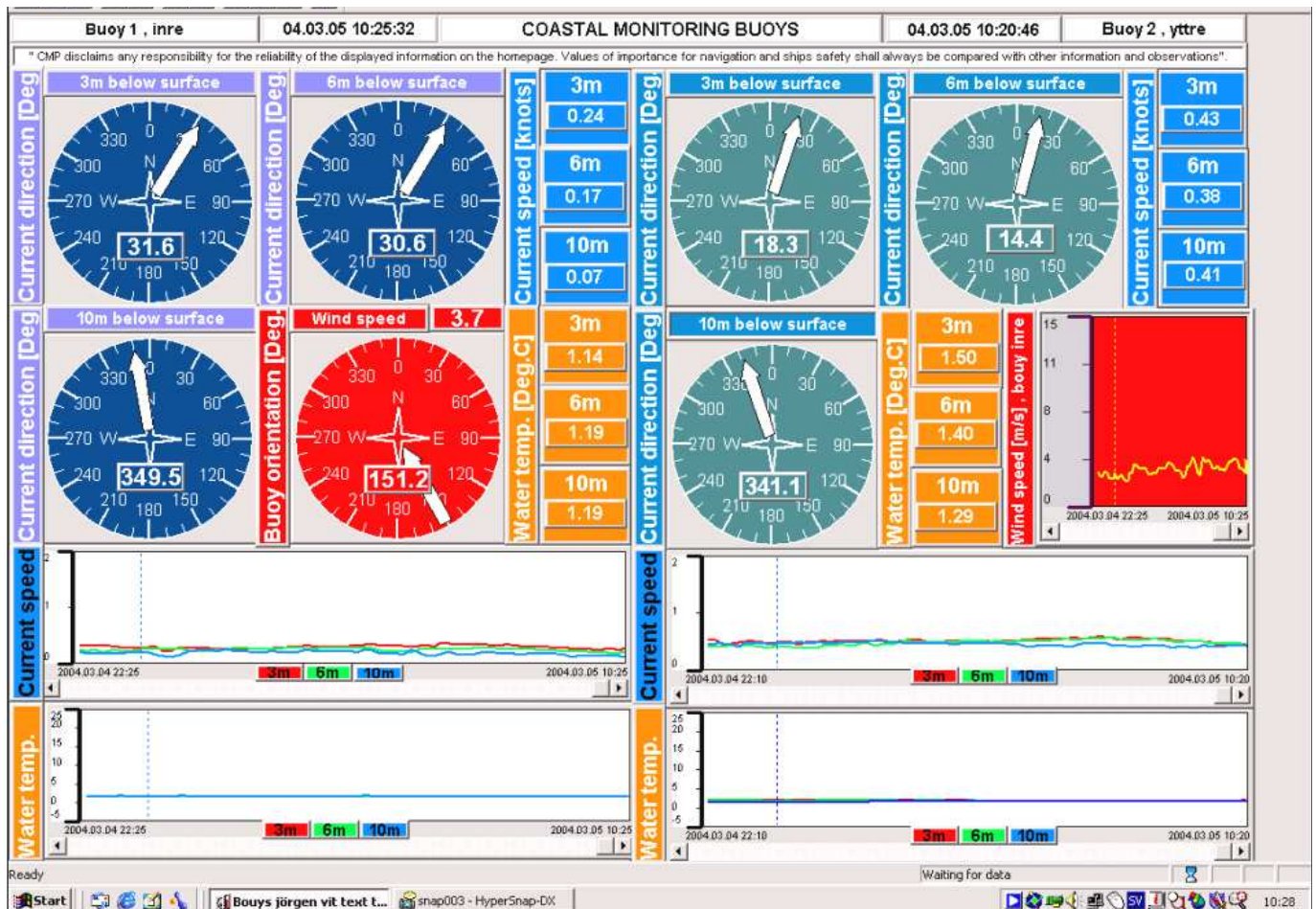
The buoys are used to monitor the currents conditions in Oljehamnen (the Oil port) and in the adjacent Swede Harbour. Each data buoy is equipped with 3 DCS (Doppler Current Sensor 3900), 3 temperature sensors and a wind sensor. Current and temperature are measured at 3, 6 and 10 meters below the surface.



The currents, the sea temperature and the wind are measured every 10 minutes. Data are transmitted via UHF to the harbour office and put on the web a few minutes delayed. Port authorities, shipping agents and vessel's masters get information on currents and wind from CMP's web site.

The information is used to enter and leave the port safely. The current conditions in the port are rather unpredictable. Current strength and current direction may change significantly during a day, indicating that the current information is needed for safety. "We are pleased with the data buoys and the sensors from Aanderaa", says product manager Anders Cederhag. "After some trouble the buoys now work fine and the sensors have been very reliable. We are also very pleased with having the UHF communication instead of cables."

For more information on Copenhagen Malmö Port and snapshots of the currents in Malmö Port see: <http://www.cmport.com>. Click >Ships in port (right side) >Malmö (left side) >Currents in harbour.



Graphical display presented via the internet.